

THE BOXGROVE BUGLE

THE MAGAZINE LINKING CHURCH AND PARISH

Boxgrove Priory, The Priory Vicarage, Church Lane,
Boxgrove, Chichester, PO18 0ED
Phone/Fax: +44 (0)1243 774045
www.boxgrovepriory.co.uk

October 2022



*The Service of Prayer and Reflection on Sunday 18 September
remembering her late Majesty Queen Elizabeth II*

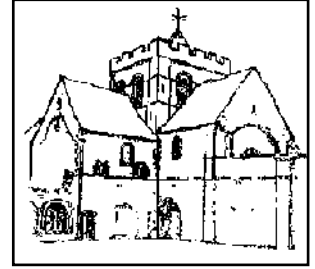
INSIDE THIS ISSUE

Who's Who in Boxgrove	2	The Optimistic Gardener	12
From Father Ian	3	September crossword solution	15
From the Registers	4	Calendar & Intercessions, Sept 2022	16
About <i>The Bugle</i>	5	A Reflection on the Gospel -	
Priory Sunday School	6	Hans Urs von Balthasar	17
'Hello from the Hall'	6	Cathedral Lunchtime Concerts	18
'An Extraordinary Three Months' -		Buy a country house for the	
a talk by Father Ian on his sabbatical	7	long term - Jennifer Hancock	19
Priory Christmas Tree Festival	7	The 'Time for Dementia' project	22
Companion Dog Show - report	8	Priory service times	32
Boxgrove Parish Council Report	10	Useful contact details	32
Boxgrove VI report	11	Chichester Library	32

Who's Who in Boxgrove

VICAR OF BOXGROVE

Fr Ian Forrester, The Priory Vicarage, Church Lane, Boxgrove,
PO18 0ED - 07758 281631 - revdianforrester@hotmail.com



HON. ASSISTANT PRIESTS

Fr Victor Cassam, 195 Oving Road, Chichester - 01243 783998
Fr Peter Bustin, 5 Chichester Drive, Tangmere, PO20 2FF - 07554 353785
Fr Norman Taylor, 7 Guernsey Road, Ferring - 07778 713872
Fr Lawson Nagel, 22 Bishopsgate Walk, Chichester, PO19 6FG - 07539 655868

CHURCHWARDENS

Mr David Bannister - 01243 380155 - churchwardens@boxgrovepriory.co.uk
Mrs Katie Kean - 01243 787884 - churchwardens@boxgrovepriory.co.uk

HON. TREASURER

Mr David Bannister - 01243 380155 - churchwardens@boxgrovepriory.co.uk

SAFEGUARDING OFFICER

Ms Lara Moyler - 07956 986496

CATHEDRAL LINK

Mr Mike Beaman - 01903 367039 - beaman_mw@yahoo.co.uk

PRIORY AND ST BLAISE CENTRE Bookings & Enquiries

Mr Mark Peters - 07729 773277 - mark@petersposse.co.uk

WSCC MEMBER FOR CHICHESTER NORTH

Mr Jeremy Hunt - 0330 2224536

CDC MEMBER FOR BOXGROVE WARD & CHAIRMAN, BOXGROVE PARISH COUNCIL

Mr Henry Potter - 01243 527312

BOXGROVE C of E PRIMARY SCHOOL

Mrs Jacqui Dommett - 01243 773309 - head@boxgrove.w-sussex.sch.uk

BOXGROVE VILLAGE HALL Bookings & Enquiries

Administrator: Mrs Sally Beckers - 01243 788332 - info@boxgrovevillagehall.co.uk

BOXGROVE VILLAGE STORES & CAFE

Open: **Mon-Fri** 7.30am-5.30pm; **Sat** 8.00am-5.00pm;
Sun 8.00am-2.00pm

Tel no: 01243 773201 - Boxgroveshop@gmail.com



FOR OTHER USEFUL CONTACT DETAILS

see page 32

From Father Ian

The death of Queen Elizabeth

There will be other opportunities to speak of the future of the monarchy and so, at this point, I really want to concentrate on the past, and on the present moment.

Few of us, here today, have known any monarch other than Queen Elizabeth II. She has been a fixed point in all of our lives, and even those who glimpsed her predecessor would have to admit that a 70-year reign has made something of an impression.

And it's an impression not just on us as individuals, not just on Britain, but on the world!

Hearing the comments, the messages of condolence and admiration of very many world leaders, over these past days, one cannot but realise how the presence of Queen Elizabeth has been a blessing to many beyond those countries of which she was Head of State.

Many of us are feeling that we have lost not just a beloved monarch, but someone who was almost a member of our family. And as we, and the leaders of nations, look to describe what made Queen Elizabeth so valued by so many, we are using words like steadfast, loving, wise, empathetic, strong and mischievous!

Thirty-six years ago there was a service to mark Queen Elizabeth's sixtieth birthday. (Sixty being, then, the age of retirement for women). The question in the air was whether this landmark in her life was a precursor to abdication, but it wasn't, of course. And as the years moved on, some seemed baffled by her continuing in her role. But she had made a promise to serve for her lifetime, and she was faithful.

At her coronation she had been anointed; set aside for her particular role, and each time she received holy communion there was a renewal of her resolve to continue in her service to God and the people committed to her charge.

She took her Christian faith very seriously, believing that Jesus was her friend and Saviour and that, strengthened by his love, she must, and could be, faithful and resilient.

She valued, hugely, the prayers that were offered for her, recognising that it was only in the overlapping of the divine and the human that everything can come to be its best.

There are two particular qualities, the interaction between which have long fascinated me, and these are faith and humour.

During the reign of Queen Elizabeth there has been a gradual, and I believe necessary, erosion of the hiddenness and mystery of much of royal life. We have seen the monarch roaring with laughter, carrying out those television appearances with James Bond and Paddington Bear, in documentaries sharing wry comments about some of the duties she was performing. Never anything unkind, never uncaring, but displaying a humanity and humour rooted in love.

/continued ...



Her work was supported for so many years by the Duke of Edinburgh, and by those who were close to her. And it is through that kind of love that we all experience God's encouragement and care.

So now?

We commend her to God, who has loved her, known her by name, blessed her work, and given her the strength needed for her quite remarkable service.

And we thank God for all that Queen Elizabeth has meant to us, and will go on meaning in the days and years ahead.

We should pray for her soul, and the Requiem Mass being celebrated, is a good way of doing that; but we should also continue to mention her in our private prayers as well.

These next days of mourning, and her funeral, will give us the necessary space to remember and to grieve, and as we do so we should also pray for the Royal Family, and for one another.

The value of the gift that God gave us in Queen Elizabeth calls into the depths of our hearts, and it would be wonderful if we too, like her, can serve his will and purpose with such faithful and enduring determination and commitment.

*(Adapted from Fr Ian's sermon at the
Solemn Requiem Mass on Sunday 11 September 2022)*

~~oOo~~

The Dog Show

What an astonishing thing it is that, twice this year, Sylvia St Aubyn Hubbard and her tremendous team of helpers have staged the Boxgrove Companion Dog Show with flair, determination, and much hard work.

Thank you all for your efforts and for the valuable funds raised!

Father Ian
—

From the Registers

Baptism

18th September: Truely Daisy

*Please keep Truely Daisy, her parents
and godparents in your prayers*

Cover photo: David Bannister

THE BUGLE

The Boxgrove Bugle is distributed **free of charge** to each household within the parish and is published [online](#), as well as being sent further afield and being available in the Priory for visitors and non-residents of the parish. The run exceeds 625 copies. The Bugle is not published in January or August.

Articles on any aspect of Boxgrove news - Village or Priory-based - are always most welcome. Material to be considered for publication should be sent by the **15th day of the month**, please, to editor.boxgrovebugle@gmail.com for publication on or around the last Sunday of the month. Alternatively, items clearly marked '**Boxgrove Bugle**' may be left in the Vicarage postbox.

DATES 2022

NB: There is no Bugle in January or August

Issue Month	Copy Deadline	Publication Date
November 2022	15 October	30 October
December 2022	15 November	27 November

BUGLE ARTICLES AND CONTENT

Please contact Tina Thurlow - editor.boxgrovebugle@gmail.com

BUGLE ADVERTISING

Please contact Tina Thurlow - editor.boxgrovebugle@gmail.com

ADVERTISING RATES 2022

Per 1/8 page £40.00 per annum £4 per month

Please make cheques payable to: '**Priory Church of St Mary & St Blaise**'

Advertisements, flyers, etc are accepted in good faith, but no liability is accepted with regard to any services or goods offered howsoever arising. Nor should material not initiated by Boxgrove Priory be taken to imply endorsement or agreement with views expressed.



The Boxgrove Bugle
is published by
Boxgrove Priory Parochial Church Council
(Registered Charity 1131214)

© and © 2022

and may be read on-line in colour at

http://www.boxgrovepriory.co.uk/boxgrove_bugle.html

Why not add a link to your desktop?

PRIORY SUNDAY SCHOOL

Sunday School will meet on the third Sunday of each month during term-time (excluding half-terms) at 10.20am in the St Blaise Centre, to then go over to the Priory for the second half of the service.

Children should be aged between 4 and 11 and they must have already started school. They are asked to arrive promptly, so that the objective of the session can be explained to everyone at once.

There is no charge and parents do not need to accompany the children. They don't need to bring anything with them - just to come along!

For further information about our Sunday School, please contact Vicky Willavise by email at vickywillavise@outlook.com.

We are always looking for more volunteers to support the Sunday School. If you would like to find out more, please contact Vicky Willavise (as above.)



Hello from the Hall!

After a long (hot!) summer, schools are back and there's lots new at the hall. We have welcomed a new evening fitness class for adults on a Wednesday, and a new



home-education group will soon be offering academic sessions twice a week at the hall. Regular hall users, Infinity Short Mat Bowls, had three members take part in The England Ladies against Kent Ladies this month and they were victorious! Well done to Sonia Burden, Denise Kirby and Di Rundle.

A huge thank-you goes out to Sylvia for yet another fantastic dog companion show and fair! Thank-you to everyone who came along and supported this event and to all the local businesses who sponsored/supported in their own ways. If you would like to offer to help with any aspect of the show next year, please do get in touch with us at community@boxgrovevillagehall.co.uk.

We are also desperately looking for helpers to keep our local Boxgrove Under 5s Play and Stay running for little ones in the area. The lovely Lottie has unfortunately had to step down after all her fantastic work to get the group up and running, and we would love to see it carry on. Please do get in touch if you can offer to volunteer set-up/make teas and coffees at this group (Tuesdays 9:30-11:00am).



An Extraordinary Three Months

Friday 28th October in the Priory at 7pm

Over a glass of wine, and with many pictures,
Fr Ian describes his recent sabbatical.

£5 donation please, at the event, to go towards
the Organ Fund.

[Metz Cathedral](#)



Have you been mulling over ideas
for your contribution to our

Christmas Tree Festival at the Priory between 9th and 11th December



The theme will be

"It's the most wonderful time of the year"

and trees depicting the fun side of Christmas will decorate the Priory

We need imaginative volunteers to decorate trees in the given subject. It is something we can take part in as individuals, teams, clubs, etc., involving the whole community.

Father Peter is 'on a mission', approaching groups and individuals, seeking their help. Anyone and everyone can take part - it just needs some imagination and a sense of fun.

If you haven't been approached, but are itching to find out more about it, send an email to Father Peter (peterpadova86@gmail.com) or the Churchwardens, Katie Kean and David Bannister (churchwardens@boxgrovepriory.co.uk), or speak to them in the Priory after a service.

Do join in - you'll have "the most wonderful time"!



The Boxgrove Companion Dog Show & Fair

Saturday 3 September 2022

A very busy Boxgrove Companion Dog Show & Fair proved to be another financial success, raising a total of £2,531.39 to be shared between Boxgrove Village Hall Community Fund and Boxgrove Priory. A detailed list of income is included in this report.

My heartfelt thanks go out to all the cheerful volunteers who helped in many ways. Special mention must be made of the Boxgrove WI ladies, who worked as a tireless team in the kitchen together with family members and other friends. Sally, who every year runs the kitchen, was suffering from a sudden severe attack of Covid and couldn't come, so well done ladies!

So many people to thank ... I wish I could name you all, but it would take a lot of space, and I would be sure to omit some of you. We could not run the show without you, and are truly grateful for your help year after year.

Our wonderful talented judges, who give their time unstintingly, had a tough time, as so many beautiful dogs were entered in the 26 classes.

Sylvia St Aubyn Hubbard

--o0o--

Some of the main results

Best in Show: Codi - a German Shepherd owned by Alison Jones

Best Puppy: Arwen - a German Short Haired Pointer owned by R. Mitchell

Obedience Classes

Triers: Marlon - a Cross Breed owned by Phillipa Hind

Starters: Magic - a Cocker Spaniel owned by Goldie Chandler

Improvers: Tanner - a Chihuahua owned by Carole Gunner

Advanced: Hobbit - a Collie owned by Diane Thorne

--o0o--

Very grateful thanks to the generous sponsors of the show

Brick Kiln Garden Centre ~ Tod Anstee ~ Graham and Ben Bruce ~ Iris Watts

Susan, Duchess of Richmond ~ The Tinwood Estate ~ Chichester Canine Society

Mr & Mrs Henry Potter ~ Eames Motor Repairs ~ The Boxgrove Clinic

Angela Killick Cards ~ Geert & Shirley Koffeman ~ Terry Stone ~ System 910 Hydraulics

Selsey Press Ltd ~ Ian & Doreen Johnstone ~ Mark Douglas, Flat Roofing Specialist

Sponsor in memory of John Hoyland ~ Great Ballard School ~

Buzby and Blue Hairdressers Maggie & David Blake ~ Arun Veterinary Group ~ Healthwise
Chiropractic ~ Aston's Gym

Aston's Health Shape & Tone ~ Oving Dog Training

/continued ...

Financial results

Show Entries:	£710
Catering:	£638.86
Raffle:	£280.00
Tombola:	180.00
Books:	£199.30
Agility:	£33.50
Sponsorship/Stall fees:	£930.00
Total (less expenses):	£2,531.39



Line up of dogs that qualified for Best in Show



Winner of Local Dog Class, Hugh Acland of Chichester, with his Whippet, Wilhelmina



Nigel Standerline signing copies of his book The Forgetful Puppy

Photographs: Sylvia St Aubyn Hubbard

BOXGROVE PARISH COUNCIL

Parish Council report

September 2022



The Parish Council met on Monday 5th September and it was learned that Cllr Jim Buckland had tendered his resignation. With his wife, he has planned so many trips away in his camper that he feels he couldn't devote the time as a Councillor. Jim did a lot in a short time towards planting one or two trees and lots of wild flowers - though these were disturbed by contractors digging up the grass verges just as the cowslips and primroses appeared, and then Highways contractors implemented a full width grass verge, cut and destroyed all the poppies. However, Jim assured me that he would help out in the latter part of this year, when we shall be planting twenty-five trees as part of the District Council's scheme towards replacing some of the ash trees lost to the die-back disease. Many of the still fairly young ash trees alongside the footpaths across 'The Common' are showing signs of the disease and will be lost eventually. Several older trees alongside the A285 have been felled as part of the necessary safety measures.

The Council agreed to purchase some signs to discourage the worsening practice of leaving dog faeces on the footpath, as I reported last month. They will be sited at the appropriate places where this anti social behaviour is at its worst. Hopefully this may bring an end to this disgusting behaviour.

WSSC Councillor Hunt reported that the County School Meals Team had won the Catering Business of The Year Award for 2022! Quite an achievement, considering the opposition included multi-million pound catering companies.

The second Boxgrove Dog Show of 2022 was once again a success: the weather was fine and many, many dogs came to enter the extensive classes, and the catering was well managed by volunteers from our Women's Institute and was almost a total sell-out. Congratulations to all involved, including those who helped in setting things up and dismantling at the end.

Of course, the saddest of news was announced on Thursday 8th September: the death of our Queen, Her Majesty Elizabeth II after 70 years on the throne, and I am at a loss to add to the thousands of words of praise for whom I would presume to be the greatest and most loved lady ever to grace these lands. She was absolutely remarkable and will be remembered throughout the world.

Now we must embrace and support our new King, HRH Charles III, and please join me in wishing him well. The world is such a different place since his Mother came to the throne, and I fear the first one or two years of his reign will be a little 'bumpy'.

God Save the King.

The next Parish Council Meeting will be on Monday 3rd October.

Henry Potter

Chairman of the Parish Council

NEWS FROM BOXGROVE WI



Our September Meeting was to a local garden - Peeler's Retreat in Arundel. When morning dawned the rain was pouring down (should we cancel?). By breakfast time it had eased and by lunchtime the sun was shining. Tony and Lizzie Gilkes warmly welcomed us to their garden. It's not a large garden but is cleverly laid out into different areas, with seats, lawns, a pond and fireplace with the fire lit. The colourful borders were full of dahlias, pelargoniums and roses. Members roamed and chatted and heard many stories about how the garden evolved. Tea was taken inside, and what a tea! There was a variety of sandwiches, scones and cakes, with plenty of tea and coffee available. We remembered our dear, late friend, Sonia Crouch, and, of course, Her Majesty, The Queen.

We are planning to support Father Peter's idea of a Festival of Christmas Trees at Boxgrove Priory and ideas about how to decorate it were discussed. Jars of jam and mini cakes? I don't think so! Members really enjoyed their time together in this relaxed setting, especially after the never-ending rain of the past few weeks. As one member remarked, she has never watched so much day-time TV.

Gardens featured yet again when nine of us joined a coach tour to Highgrove, then the home of Prince Charles and Camilla, but now that of King Charles III and the Queen Consort. It was a long journey, as the garden is in Gloucestershire. We were lucky with both the weather and our guide. It is a large estate, broken up into lawned areas bounded by shaped, clipped hedges to provide privacy, along with woodland areas, vegetable garden and wild flower meadows. All is maintained strictly along organic principles. It was unfortunate that we were seeing the garden after a period of prolonged drought and at the end of summer. However, there was still a lot of colour, with many hydrangeas, dahlias, rudbeckias, penstemons and roses. We finished up in the tearoom, no surprise there! The cream teas were delicious and everything was excellent, as you would expect in the home of our King.

The next notable WI event is "Faberdashery", which is being organised by the West Sussex Federation of WIs. It is being held in Boxgrove at our Village Hall. It's an opportunity to purchase a range of fabrics and crafts donated from organisations and individuals throughout the county. Needless to say a cream tea is included.

Our next meeting is on Wednesday, 12th October at 2.15 pm at the St Blaise Centre. The speaker is John Oliver of the RSPB. He will be talking about Pulborough Brooks. With Climate Change and Avian Flu affecting our birdlife, this should be an interesting talk. If you would like to join us at the meeting or learn more about the WI in Boxgrove then ring, text or email me. My contact details are below.

Wendy Austin-Ward

Secretary, Boxgrove WI

Contact me on **01243 773563, 07947 946538**, wpaustinward@outlook.com



*'He uses statistics as a drunken man uses lamp-posts -
for support rather than illumination.'* Andrew Lang (1844-1912)

THE OPTIMISTIC GARDENER

High Trees, September 2022 ~ No.57

OWOBs take to the road

As always, in order to enjoy to the full, and in colour, all Janet's pictures, readers are encouraged to read this article online via the 'Bugle' page on the Priory website: <http://www.boxgrovepriory.co.uk/bugle.html>

~ . ~ . ~

Just as one sees Easter eggs in the shops shortly after Christmas, or Festive cards and mincemeat appearing in early October, I know that the Ride & Stride event is just around the corner when Mark's email drops into my inbox some time in late spring!

For those of you who have just arrived from another planet, the Ride & Stride sponsored event is to raise money for that very worthwhile charity - The Sussex Historic Churches Trust, as well as 50% of the sponsorship going towards the participant's own church.

The Sussex Historic Churches Trust was founded in 1956 to give grants for essential repairs and restoration of places of worship of architectural and historic interest throughout Sussex. Since 1956, the Trust has assisted more than 500 churches and places of worship across Sussex.

I have taken part on four occasions - the last time being 2018 when I decided to try and visit as many churches dedicated to St Mary as I could in one day. In that particular year the allotted day (usually the second Saturday in September) was the sort of day for curling up in front of the fire with a good book. So I deferred my ride until the following day and took selfies of me and the bike at all the churches I visited - just in case anyone required proof of my 47 mile ride. Of course, they didn't! (If you are interested to read the account of this it can be found at the following link on the Boxgrove Priory Facebook page: http://www.boxgrovepriory.co.uk/bugle/2018_11.pdf)

This year I was determined to choose that nice round number - fifty miles - as a target to set myself. I enjoy the cycling on the day but probably get even more enjoyment from the planning aspect. This year I decided that I needed to plan a route which was not too hilly and included a return to the pit-stop in Barnham for my lunch. This meant devising a figure of eight route with the longer distance planned for the morning and a chance to return home for lunch so I wouldn't have to carry it with me. My bike is not the slinky lightweight racing bike you see being ridden by MAMILs (Middle Aged Men In Lycra) but more like those ridden by suffragettes sporting the following outfits:

I have to say - I didn't look quite as dapper as this particular Edwardian! I was more of a SWAPSHOP - (Sensible Woman Aboard Pushbike Sporting Hairy Old Pullover), though Gerry suggested OWOB (Old Woman On Bike!)



/continued ...

My route this year, as you may be able to decipher from the minuscule map on the last page, took me west of Barnham and Chichester for a total of 32 miles and then, after lunch, south and east of Barnham for another 20 miles or so. I decided at the last minute not to actually return to the High Trees pit-stop for lunch but to have a picnic with the support team at Barnham St Mary's church. I feared that if I sat down at home for my sandwich and apple I might find it difficult to galvanise myself to set off on the second leg.

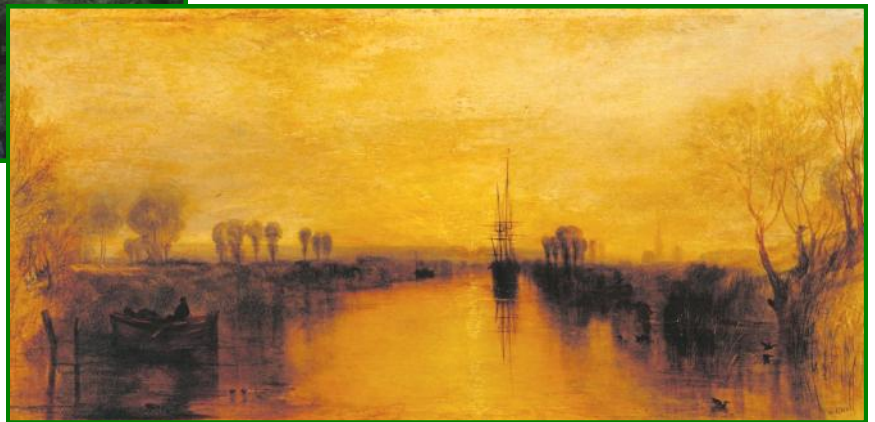
You possibly are wondering why I chose such a strange shape for my figure-of-eight but the answer is very simple. I was trying to do as much off-road riding as possible - using cycle lanes, back-ways and quiet country roads with which I am familiar. I discovered some new tracks which I had never walked or cycled along before, making the ride a bit of an adventure; I don't get out much!



I won't bore you with a mile-by-mile description of the day's ride but just relate some of the highlights. One of the joys of visiting local churches is meeting the welcomers - all of whom are very nice people. At my first church, St George's in Eastergate, I met a lady who had been running the fund-raising concert I had sung with a couple of weeks before. At another St George's - the one in Donnington (a real 5-star welcome) - I was greeted by a committee - three were decorating the church for their harvest festival the next day and one was the official R&S welcomer. I took advantage of their hospitality and enjoyed a large coffee with a chocolate marshmallow biscuit.



The approach to Donnington from North Mundham was via the Chichester Canal tow path. The first part from Hunston to Donnington was reasonably level - I stood on the spot which Turner may well have painted the picture of the Chichester canal with the cathedral spire in the distance, circa 1829.



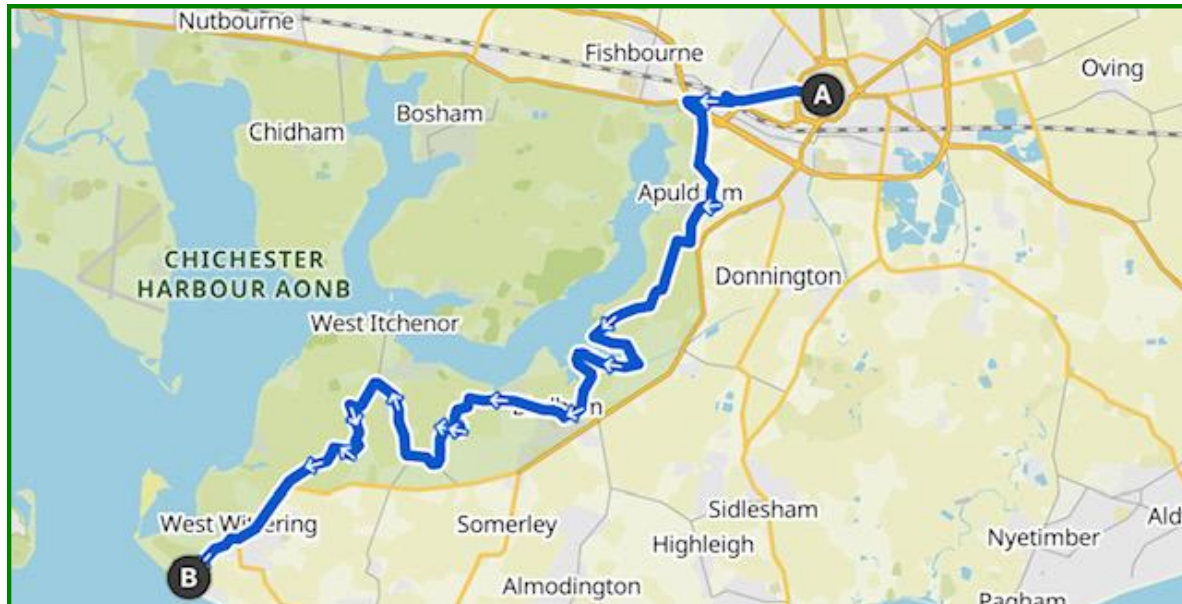
Not a lot has changed in the intervening years; but should the tall-masted ship in the Turner now try to navigate the canal to Chichester harbour it would find the B2201 - Selsey

Road - blocking its path. The tow path after this point became more of a roller-coaster and I was quite pleased not to plummet into the canal while admiring the bird life on the water, including one splendid heron which took absolutely no notice of me.

continued ...

After leaving the tow path at the Chichester Marina I was able to see millions of pounds worth of sea-going vessels glistening in the sunshine as I headed for the cycle route, new to me, called [Salterns Way](#).

Salterns, or 'salt works', are places where crystalline salt was extracted from salt water - either sea water, or brine from inland springs.



Map of Salterns Way

I assume these were all around Chichester Harbour, and the route is aptly named as it goes its full 19km distance from East Head northwards on the edge of the harbour into central Chichester.

The busiest part of my ride was from Lavant to Boxgrove, where I joined the world and his wife using this very straight road, passing the preparations for the Goodwood Revival. Fortunately this popular event was not until the following weekend. At Boxgrove I popped in to the home turf to sign up with Mark's long-suffering wife and then phone my long-suffering husband to give him my e.t.a. for Barnham.

We sat in splendid isolation with our picnic basket, with the smell of newly cut grass, and only saw one other cyclist dropping in to sign his name in Barnham church. A ham sandwich has never tasted so good!

Another highlight of the day was my visit to the local plant shop and cafe at Ford Open Prison, rather aptly named *Serving Thyme*. I enjoyed a very reasonably priced cuppa served by some cheery prisoners who were presumably trustees, along the lines of Norman Stanley Fletcher working on the prison farm in Porridge.

I arrived home after 8½ hours on the road - not all of it spent astride the velocipede - and my cycling app assured me I had exceeded the target of 50 miles and had done 52.82 miles.

Next year why not have a go yourself? It is a very worthy cause and a good way to spend a day visiting our beautiful Sussex churches AND raise some money for Boxgrove Priory as well.

Janet Reeves

CALENDAR AND INTERCESSIONS ~ OCTOBER 2022

1 Sat	St Teresa of the Child Jesus	The shrine at Lisieux
2 Sun	HARVEST THANKSGIVING (Trinity 16)	Parish & people
3 Mon	Dedication of Chichester Cathedral	The Cathedral staff
4 Tue	St Francis of Assisi	The Unity of Creation
5 Wed	Feria	The Departed
6 Thu	St Bruno, Priest	The Charterhouse
7 Fri	Our Lady of the Rosary	Growth in Prayer
8 Sat	Of Our Lady	Florists
9 Sun	TRINITY 17	Parish & people
10 Mon	St Paulinus, Bishop	The Province of York
11 Tue	St Ethelburga, Abbess	Nuns
12 Wed	St Wilfrid, Bishop, Secondary Diocesan Patron	Christian Unity
13 Thu	St Edward the Confessor	The Monarch
14 Fri	St Callistus, Pope & Martyr	Pope Francis
15 Sat	St Teresa of Jesus, Virgin & Doctor	Theologians
16 Sun	TRINITY 18	Parish & people
17 Mon	St Ignatius of Antioch, Bishop & Martyr	Christian writers
18 Tue	St Luke the Evangelist	The Ministry of Healing
19 Wed	St Philip Howard and the Sussex Martyrs of the Reformation	Christians in Sussex
20 Thu	Feria	Walsingham
21 Fri	Feria (monthly Requiem)	The Departed
22 Sat	Of Our Lady	Theological training courses
23 Sun	DEDICATION FESTIVAL	Parish & people
24 Mon	St Antony Mary Claret, Bishop	Mirfield
25 Tue	Sts Crispin & Crispinian, Martyrs	Abused children & recovering adults
26 Wed	Alfred the Great, King	The Parish of Lessay
27 Thu	Feria	The Travel Industry
28 Fri	Sts Simon & Jude, Apostles	Church Leaders
29 Sat	Of Our Lady	Parish Priests
30 Sun	ALL SAINTS SUNDAY	Parish & people
31 Mon	Feria	The Peace of the World



The Bugle's better on line -
it's in colour and has all the hyperlinks.
http://www.boxgrovepriory.co.uk/boxgrove_bugle.html



A Reflection on the Gospel

If only we were not so used to the Gospel, it would strike us with great force, like an apocalyptic tempest.

Without Easter, Good Friday would have no meaning. Without Easter, there would be no hope that suffering and abandonment might be tolerable. But with Easter, a way out becomes visible for human sorrows, an absolute future: more than a hope - a divine expectation.

It is not the dry manuals (full as these may be of unquestionable truths) that plausibly express to the world the truth of Christ's gospel, but the existence of the saints, who have been grasped by Christ's Holy Spirit.

The Christian's supreme act is to transform his life into this idea of himself secreted in God, this 'individual law' freely promulgated to him by the pure grace of God.

The kingdom of God cannot be coerced into existence by any amount of political effort. It remains the gift of God and of the returning Lord, to a world that cannot perfect itself by its own efforts.

There is but one turning wherein earth becomes heaven, and this turning point is the Church.

In meditating on all the stages of Mary's life, we learn what it means to live for Christ and with Christ in our daily lives in an intimacy which has nothing exalted about it but a perfect inner closeness.

In order that he shall find God, the Christian is placed on the streets of the world, sent to his manacled and poor brethren, to all who suffer, hunger and thirst; to all who are naked, sick, and in prison.

Hans Urs von Balthasar (1905–1988),
Swiss theologian and Catholic priest



stonepillow

Helping homeless people

St Joseph's, Hunston Road, Chichester, PO20 1NP
Tel: 01243 537934 ~ Email: admin@stonepillow.org.uk
<https://stonepillow.org.uk/>

Please continue to leave any non-perishable food you can spare in our bin just inside the inner doors of the church. We welcome gifts, including furniture and electrical goods, at the Restore Shop in Terminus Road (Stonepillow Restore, Unit 3, Plot 27, Terminus Road, Chichester PO19 8UE; Tel: 01243 698547; restore@stonepillow.org.uk. We can collect larger items if needed.

We are also looking for volunteers who don't mind getting stuck in and sorting our donations; this will enable us to make the best use of them. So many people have so much experience which would be very welcome ...!



Did you know that whenever you buy anything online - from your weekly shop to your annual holiday - you could be raising free donations for Boxgrove Priory with [easyfundraising](https://www.easyfundraising.org.uk/causes/boxgrovepriory/?utm_campaign=raise-more)?

There are over 4,500 shops and sites on board ready to make a donation - including Waitrose, Sainsbury's, Tesco, Amazon, eBay, Argos, John Lewis, Laithwaites Wine, Booking.com, M&S, the AA and the RAC to name but a few - and it won't cost you a penny extra to help the Priory raise funds.

All you need to do is:

1. Go to https://www.easyfundraising.org.uk/causes/boxgrovepriory/?utm_campaign=raise-more, and join for free.
2. Every time you shop online, go to easyfundraising first to find the site you want, and start shopping.
3. After you've checked out, the retailer will make a donation to Boxgrove Priory at no extra cost to you whatsoever!

There are no catches or hidden charges, and the Priory will be really grateful for your donations.

Thank you for your support.



CHICHESTER CATHEDRAL

Lunchtime concerts

The Cathedral Concerts are at 1.10pm on Tuesdays during term-time. The series is self-supporting, and thrives through the generosity of its audiences. There is no charge for admission but a minimum donation of £3 per person is invited (Gift Aided as appropriate).

4 October

Patrick Hemmerlé, piano

11 October

The LIPS Quintet

25 October

Chichester Symphony Orchestra,
conducted by Simon Wilkins
with **Tim Rumsey**, piano

1 November

Charlotte Rowan & Charlotte Stevenson,
violin and piano

8 November

Jeremiah Stephenson, organ

15 November

Duo Dorado, baroque violin
and harpsichord

22 November

Mateusz Rettner, piano

Buy a country house for the long term

By Jennifer Hancock,
Director at [Property Acquisitions](#)

With many different questions surrounding the ultimate country house purchase, it is important to buy for the long term. Buying a property that has potential to have value added for when your needs change in years to come, can be without doubt a great benefit financially.

I often discuss with my clients the necessity to imagine the home in ten to fifteen years' time and how suitable it will be then. Not everybody likes to think about your little children being teenagers or older, or for early retirement - whether you will manage the stairs - but time passes quickly, as we all know. Future proofing means you are buying well.

When looking for a new home, it is vital to list all the pros and cons as pragmatically as possible, so that you know what you are buying. The costs of moving are significant - and will most likely only increase as years pass - so you don't want to buy a house only to find that you need to move again quickly because it's not quite right.



Important factors to consider before purchasing a house include:

Location, location, location ... - this is always my number one rule. Avoid busy roads or motorways in the near vicinity of the house. Also, do your research on what's close by. A nearby pylon obstructing the view can be off putting for future buyers, and you may not want the aroma of next door 's animal farm floating through your garden on a hot summer's day.

Buy a home you can always sell easily. Remember, your next buyer will buy for the same reasons you fell in love with it.

Extra accommodation is always good for letting out for additional income, for childcare, or for live-in help if needed. This could be an annexe, a studio or a separate wing of a house.

Aspects are important, with attention given to the amount of natural light pouring into the house on the dark winter days. Avoid a north facing rear garden if you desire unlimited sunlight.

Look at ways you can extend, with a loft conversion, or perhaps how to add value and space. Creating an extra bedroom and making it a four- or five-bedroom family house can be managed in years to come, enabling extra square footage and giving you a bigger more valuable home when the selling time comes.

/continued ...

There is flexibility on council tax bands. Research this, as there can be a big difference depending on the location and types of property, which are often determined by age.

Look at the Energy Performance Certificate (EPC). Energy performance is more important than it has been for a good while, so you need to know the costs of running the house. Find out what the current EPC rating is as well as what rating the property has the potential to be. You don't need to spend a fortune to make a home more energy efficient.

A buying agent can help you in your decision-making process by supporting you through the search as well as the transaction, making the difference between a good purchase and one that is not.

Jennifer Hancock

**For more information about buying a home
in and around Chichester, contact me on
+44 7776452128 or visit www.propertyacquisitions.co.uk**



Please remember - if you have any unwanted sewing machines, carpentry, garden or engineering tools, Tim Pullan and Malcolm Knight collect such items for 'Tools with a Mission' and 'Tools for Self-Reliance' respectively to be despatched to Africa to help families and individuals to start or expand their business.

Tim Pullan 01243 532065
Malcolm Knight 07722 115212
They can arrange to collect.



**What's on for October Half Term
at Petworth House & Park
Saturday 22 October – Sunday 30 October
10am-4pm**

Free event but **normal admission applies** (free for National Trust members)

This half term, families can explore the Pleasure Garden and have fun spotting the pumpkins hidden across the grounds while strolling through crunchy leaves. Then, search out the seasonal colours and different leaf shapes at Petworth that are marked on the colour catcher chart. Collect what you find, and help create deer shaped wild art installations by attaching your leafy collections to the animal models.

Find out more at www.nationaltrust.org.uk/petworth-house-and-park.

PACT Autumn Lecture
(Petworth Area Churches Together)
Friday 14 October at 7.30pm
St. Mary's Church, Petworth, GU28 0AD

Supporting Refugees and Asylum Seekers

Roger Pask

Petworth Area Churches Together (PACT) is delighted to welcome for our Autumn Lecture on Friday October 14th at 7.30 the founder and trustee of Sanctuary in Chichester, Roger Pask.

People from Ukraine, Afghanistan and elsewhere are arriving in our area in great need, having lost everything and suffered devastating trauma. Sanctuary in Chichester is committed to welcoming them and helping them to survive before supporting them to integrate, heal and thrive.



Do join us at St Mary's Church, Petworth, GU28 0AD
Free entry; wine and canapés afterwards

Details from
geraldgreshamcooke@gmail.com ~ 01798 342151
and www.petworthareachurches.together.com



*Technically, Moses was the first person with a tablet
downloading data from the cloud ...*



Please continue to support the



Urgently needed items include tinned carrots, peas and green beans, sponge puddings, tinned fruit, tinned meat, rice, tinned potatoes/instant mash, tinned rice pudding/custard

Website link
for details of food donation points, opening hours, etc
or phone 01243 773687

Time for Dementia



Local families affected by dementia are being invited to take part in an award-winning programme, to help train the healthcare professionals of tomorrow and improve dementia care.

The **Time for Dementia** project, supported by Alzheimer's Society, pairs families affected by dementia with undergraduate students, helping to better educate them about life with dementia and the challenges that come with it.

This autumn a new cohort of Brighton and Sussex Medical School medical students will be taking part, and Alzheimer's Society are now seeking families in the area who would like the opportunity to make a difference to training health professionals.

Time for Dementia is a fantastic way for the next generation of healthcare professionals to gain first-hand knowledge of what it's like living with dementia.

If you would like to know more about the project, or you know someone with dementia and a family carer who would like to take part, please get in touch with us at timefordementia@alzheimers.org.uk or call **07483 137539**. More information can also be found at alzheimers.org.uk/timefordementia.



Who was the greatest comedian in the Bible? Samson. He brought the house down.

At what time of day was Adam created? A little before Eve.

Which Bible character had no parents? Joshua, son of Nun.

What animal could Noah not trust? Cheetah.

Who was the straightest man in the Bible? Joseph: Pharaoh made him a ruler.

Where's the first mention of laxatives in the Bible? In Exodus - the part when "Moses took the tablets and went into the wilderness".

IT'S TIME TO OVERHAUL THE PRIORY ORGAN



The organ in Boxgrove Priory is small but beautiful. It's astonishingly versatile and, over the years, has provided the 'soundtrack' to thousands of services. But it is now in need of some TLC.

The plan is to dismantle it and take sections of it to the Organ Builder's workshop. Once there, it will be cleaned very thoroughly and all the leatherwork will be renewed. Then, returned and rebuilt in the Priory, it will serve us again, well into the future.

It costs money, of course, and we still need to raise about £15,000. Many thanks to those who have helped us by making donations, or by approaching Trusts and the like. We have a way to go with this project, but we are hoping that, with one more 'push', we shall be able to make the restoration happen.



Visit the **Sussex Snowdrop Trust's** website at <https://www.thesussexsnowdroptrust.com/> to read about the wonderful work they do for children and their families.



A thief broke into my house last night. He started searching for money, so I got up and searched with him.



*I had a panic yesterday.
I couldn't work out how to operate the iPhone and the resident tech expert was asleep ... because he's 5.*



If you are enjoying reading the Bugle and would like to receive notification when future editions are available on the Priory [website](#), please email the editor at editor.boxgrovebugle@gmail.com.



INVESTING IN A FAIRER WORLD

"The way we work we have learned from the bees. Back to back. Shoulder to shoulder. If we are capable of putting into practice 1% of the way that bees in a hive work together, I believe we could solve 99% of our problems."

Chino Henriquez, Apicoop (a Fairtrade honey co-operative)

~.~.~.~



Find out more by watching the video on YouTube:

<https://www.shared-interest.com/gb>

Shared Interest helps people in the developing world to earn a fair living. By investing between £100 and £100,000 in a Share Account, UK residents enable Shared Interest to provide much needed finance across the globe. Last year alone, Shared Interest helped over 400 organisations in 58 countries. Fairtrade honey co-operative Apicoop, in Chile - whose farmers regularly face earthquakes and volcanic eruptions - moved into blueberry production with a Shared Interest loan.

Chino says, "Due to the last eruption, we lost 5,000 hives, which is a significant number for the beekeepers in that area of Southern Chile. Luckily, because we are a co-operative, we don't just rely on one area for our production. We moved into blueberries so as to not put all of our eggs into one basket. It was a way of protecting ourselves 'just in case'. Never think your small contribution cannot make a difference. Every bee that enters one of our hives can only carry a very tiny amount of nectar. But when you open our hives and they are bursting with honey, you realise how each bee has played its part."

It's the same with Shared Interest investors. It's when we all do our small part that we make the biggest difference. As an investor in Shared Interest, you become part of our supporter community. As well as receiving our quarterly newsletter either by post or online, you may also like to attend one of our events across the UK to meet with other investors and discover the difference your investment makes. As a member, you will have an equal voice and vote regardless of investment size. You can open a Share Account today with £100 upwards.

For local information, contact Tim Pullan - 01243 532065. To find out more direct from [Shared Interest](https://www.shared-interest.com), call 0191 233 9102 or email membership@shared-interest.com.

Boxgrove Village Hall's
QUIZ NIGHT!
 Hosted by 'Big Al'
EVERY LAST WEDNESDAY
OF THE MONTH!
 Licensed bar open from 7:30
BRING YOUR OWN FOOD
 (but please buy our booze!)
Quiz at 8:00
 max 6 people per team - £3 per person

I B Electrical Services
 Est 2003
 'NAPIT' approved electrician
 All works guaranteed & insured
 Reasonable rates and local
 Call Ian on 07873 358855



Ewart McKie
 Expert Repairs to
 Cane and Rush
 Seating and
 Furniture
 ewartmckie@yahoo.com
 Boxgrove,
 Chichester
 07826 429196



Services & Music events
 in and for the Priory
The Boxgrove Bugle
 Diocesan e-bulletin
 All available at
www.boxgrovepriory.co.uk




**The home buying experts
 for West Sussex**

Established in 2003 with over 30 years' experience,
 enviable contacts and in-depth market knowledge, we
 offer our clients discerning independent advice acting
 on their behalf as their dedicated property buying agent.
 We are the best-kept secret in West Sussex.

jh@propertyacquisitions.co.uk
 01243 531 133

jh. Jennie Hancock
 Property Acquisitions

FOOT HEALTH PROFESSIONAL

and qualified Manicurist

DIANA HOTHERSALL

MCFHP DIP MAFHP

Qualified at SMAE INSTITUTE, Maidenhead 2013

Dedicated to delivering all aspects of Foot care. Treatment, Maintenance, and Advice.

HOME VISITS — 01243-696093

MOBILE — 07837 924254

dianahothersall@icloud.com



KUU architecture

offers a bespoke domestic and commercial architectural design service covering:

Free Initial Consultation ~ Concept & Design
Development ~ Planning Applications ~
Building Regulations Approval



Visit our website www.kuuarchitecture.com

call us on 07775 968067 or

email info@kuuarchitecture.com

Let's talk about your project



**AGRICULTURAL PROJECTS
COMMERCIAL
INDUSTRIAL
HOME**

**FABRICATION & WELDING
STRUCTURAL STEEL
BLACKSMITHS
MACHINING**



UNIT 9, WOODHORN BUSINESS CENTRE, Oving
E: sales@mjengineeringsussex.com
W: www.mjengineeringsussex.com
T: 01243 527400




- Flowers for all special occasions
- Wedding and event floristry specialist
- Large selection of fresh flowers always available
- Order service available
- Local, national and international delivery service
- Seasonal workshops, e.g. Christmas Wreaths

 janewalkerforgeflowers.co.uk

 forgeflowers@gmail.com

 01243 788484

 Stane Street, Halnaker,
Chichester, PO18 0NQ



The Society presents its next lecture on

**Tuesday 25 October at 2 pm
at Boxgrove Village Hall**

***Landscape and the Environment
From the Industrial Revolution
to the 20th C***

Tricha Passes explores ways artists
addressed new moments

For information:

**www.tasboxgrove.org.uk
or Elaine, tel: 01243 555644**

New members and guests very welcome

THE BOXGROVE

PHYSIOTHERAPY & REHABILITATION CLINIC

Your Local Clinic for
**PHYSIOTHERAPY
PODIATRY & CHIROPODY
CLINICAL MASSAGE**

01243 696630

When booking please
quote 'BUGLE BOX'
for a £10 discount
on your treatment.

**BUGLE
BOX**

The Old Granary, The Street, Boxgrove, Chichester, PO18 0ES
01243 696630 info@theboxgrove.com

KEVIN HOLLAND FUNERAL SERVICE

Independent Family Business

24 Hour Personal Service

Private Chapel of Rest

Parking Available

Golden Charter Pre-Paid Funeral Plans

Arrangements may be made from the comfort of your own home

Golden Charter
Funeral Plans 

246 Chichester Road

Bognor Regis

PO21 5BA

Tel: 01243 868630

www.kevinholland.co.uk



hancock

Letting & Estate Agents

Make yourself at home

Buy, sell or let with an independent
estate agent – established since 1991

Lettings 01243 531111

Sales 01243 531155

office@hancockpartners.co.uk

Hancock and Partners

5 Northgate, Chichester PO19 1BA



Walberton Place Care Home

If you're thinking about a care home you'll find a warm welcome at Walberton Place. Family run, our care is the kind we would want all of our loved ones to receive. Our new home is luxurious and beautifully furnished, with clean, light and airy spaces for residents to relax and enjoy life. We welcome guests at any time, so come and meet our fantastic staff and residents, have a cake in our cafe or chat over a drink in our very own pub.

- Person-centred dementia care
- Tailored meaningful activities
- Luxury en-suite bedrooms
- Daily fine dining
- Themed pub
- Hair salon



01243 928 217



www.countrycourtcare.com



Yapton Lane, Walberton, Arundel, West Sussex, BN18 0AS

Music Tuition

Piano - Singing - Brass - Theory

Free 20 minute taster session

Professional teachers, excellent examination results, all ages and stages welcome!



Contact Hilary or Paula

07501923735 ~ 01243 842150

info@musicsmart.org.uk

Check out our website to join one of our Community Choirs

www.musicmart.org.uk



**THE MARTIN SEWELL
BUILDING COMPANY**

An award-winning Chartered Building Company that has worked in the Sussex area since 1985, gaining a well-deserved reputation for professionalism, reliability, high quality craftsmanship & project management skills.

Experienced in all types of building projects, from large commercial to the sensitive renovation of listed buildings, bespoke new-builds or extensions & refurbishments.

Telephone 01243 542056

Email martin@msbc.uk.com

www.msbc.uk.com



Ridea Technology

www.ridea.co.uk

Need help with your technology?

For sourcing of or assistance with your Computer, Tablet, Internet and home Audio/Visual equipment:

Tel: 01243 216121 / 07970 291302

E-mail: help@ridea.co.uk

THE SAINT BLAISE CENTRE BOXGROVE

The Saint Blaise Centre is available for hire at very reasonable rates and offers a comfortable environment with fully-equipped kitchen

**Enquiries/bookings please contact
Mark Peters - 07729 773277**

**A.S.A.P.
Removals
& Storage Ltd**

- Removals
- Storage
- Packing
- Clearance
- Nationwide Service
- Fully Insured



Call 01243 781819 or 0800 002 95 45

www.asapremovals.co.uk

enquiries@asapremovals.co.uk

Proud members of
Checkatrade.com
Where reputation matters



Painter & Decorator

Locally based
Est. 2000
Interior & exterior projects
Competitive prices

**For a free Estimate
call Dominic on:**
01243 533685 - 07939 248788
domnuke@hotmail.co.uk

Peter Roberts

Chartered Tax Adviser CTA ATT
PR Personal Tax

Formerly a Tax Adviser for a local leading firm of Chartered Accountants for many years, now a sole practitioner providing

- Personal self-assessment tax return completion
- Personal Tax Reviews • General personal Tax compliance
- Quick, efficient and personal service including home visits at no extra cost

01243 773580 • 07939 819364
prpersonaltax@btinternet.com
www.prpersonaltax.co.uk

DAVID DOYLE

GARDENING SERVICE

Local, reliable,
RHS-trained gardener.

Lawn mowing, weeding,
planting, trimming,
general pruning.

Based in Boxgrove

075 21187 827
01243 784060

The Old Coach House, 14 West Pallant, Chichester, West Sussex PO19 1TB

01243 523723

chichester@todanstee.com
todanstee.com

Tod Anstee

Chichester

Your parish, your property... our passion

Tod Anstee is an independent company with a strong local history providing our clients with the widest market exposure and a highly proactive approach to selling and letting. Sam has unrivalled knowledge of the parish having spent over 20 years living in the village of Boxgrove.

Call for free marketing advice from our residential sales and lettings team in Chichester.



Sam Tod
residential sales
partner



Ros Healey
residential lettings
letting partner

sales & lettings | residential | country houses | development | land | new homes | property management

PRIORY SERVICE TIMES

Sunday	8.30am	Low Mass
	10.30am	Solemn Mass
Monday	9.00am	Low Mass
Tuesday	10.00am	Low Mass with short homily (followed by coffee)
Wednesday	12.00pm	Low Mass
Thursday	10.00am	Low Mass
Friday	12.00pm	Low Mass
Saturday	10.00am	Low Mass

Confessions heard by appointment.

On the first Sunday of the month at the 10.30am Mass the setting of the Ordinary (Kyrie, Gloria, Creed, Sanctus, Benedictus and Agnus Dei) will normally be congregational, with anthems and motets sung by the choir. There will not be Sunday School on that day (please see page 6 for Sunday School arrangements).

Readers are advised to check service times on the Priory [website](http://www.boxgrovepriory.co.uk/worship.html) (<http://www.boxgrovepriory.co.uk/worship.html>), as it is necessary from time to time to amend them.

You are encouraged to attend the services in person; however, if you prefer you can still 'join in' the Mass from the Priory, 'live' or at a time which may be more convenient for you, via the Parish [Facebook](#) page.



Useful contact details

Local Police

Emergencies 999 or 112
Other matters 0845 60 70 999 or 101

Citizens Advice

Consumer helpline 0345 4040506

Action on Elder Abuse

Confidential helpline 080 8808 8141

Action Fraud

National fraud reporting centre
0300 123 2040



*The Church is open daily
and all are welcome!*

CHICHESTER LIBRARY

Tower Street, Chichester



Telephone 01243 777351
(Renewals 01243 642110)

OPENING HOURS

Monday-Friday 9.00am - 6.00pm
Saturday 9.00am - 5.00pm
Sunday closed

Please check opening hours and refer to the customer charter for what to expect when visiting:

<https://arena.westsussex.gov.uk/web/arena/customer-charter-full>